

# New Grade Separation Bridge on Sturgeon Lake Road over the Canadian Pacific Railroad



## What's new with the Sturgeon Lake Road Improvements Project?

The purpose of the Sturgeon Lake Road Improvements Project is to reduce traffic delays due to rail traffic, enhance emergency response time to and evacuation time from Prairie Island, and improve traffic safety. To achieve this, Sturgeon Lake Road needs to be elevated to overpass the railroad tracks. Safety will also be improved through the addition of turn lanes at key intersections, and the construction of a multi-use trail will better serve non-motorized traffic.

A draft update to the Sturgeon Lake Road Improvements Environmental Assessment (EA)/Environmental Assessment Worksheet (EAW) has been published and is available for public review on the project website or at the Red Wing Public Library. In addition, roadway design is progressing and concepts for visual quality elements such as landscaping and bridge aesthetics are being considered.

Written comments on the EA/EAW Update will be accepted from November 25 to December 26, 2013. A public hearing will be held December 10, 2013, and will also serve as a public open house to present information and solicit feedback on visual quality aspects of the project. Please join us!

## You're Invited...

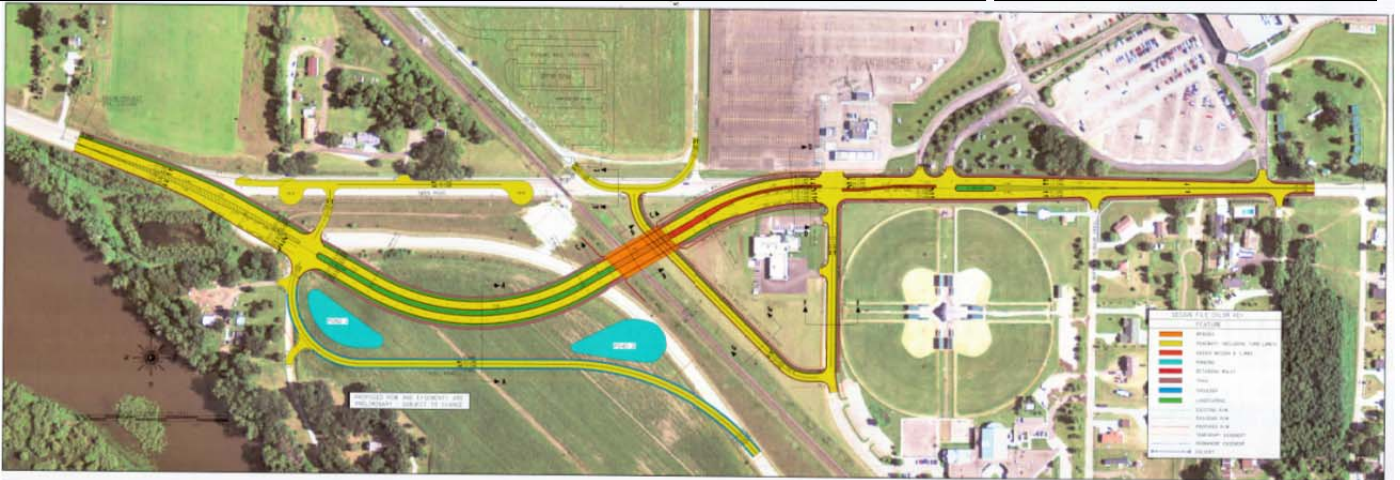
Please join us for a public hearing and open house on the Sturgeon Lake Road Improvements Project

**DATE:** December 10, 2013

**TIME:** 4:30 PM to 6:30 PM

Brief presentation at 5:00.  
A court reporter will be available to record public comments on the EA/EAW

**LOCATION:**  
PIIC Community Center  
1158 Island Boulevard  
Welch, MN 55089



## What are the next steps?

After the comment period ends, a Final EA/EAW will be prepared. Right-of-way negotiation and acquisition, and final plan approval will follow. Construction is not yet funded, so no construction schedule has been established.

**For more information, please contact:** Ron Rosenthal, Engineering Director, City of Red Wing  
229 Tyler Road North, Red Wing, MN  
651-385-3626  
ron.rosenthal@ci.red-wing.mn.us

**Or visit:** <http://www.red-wing.org/sturgeonlake.html>